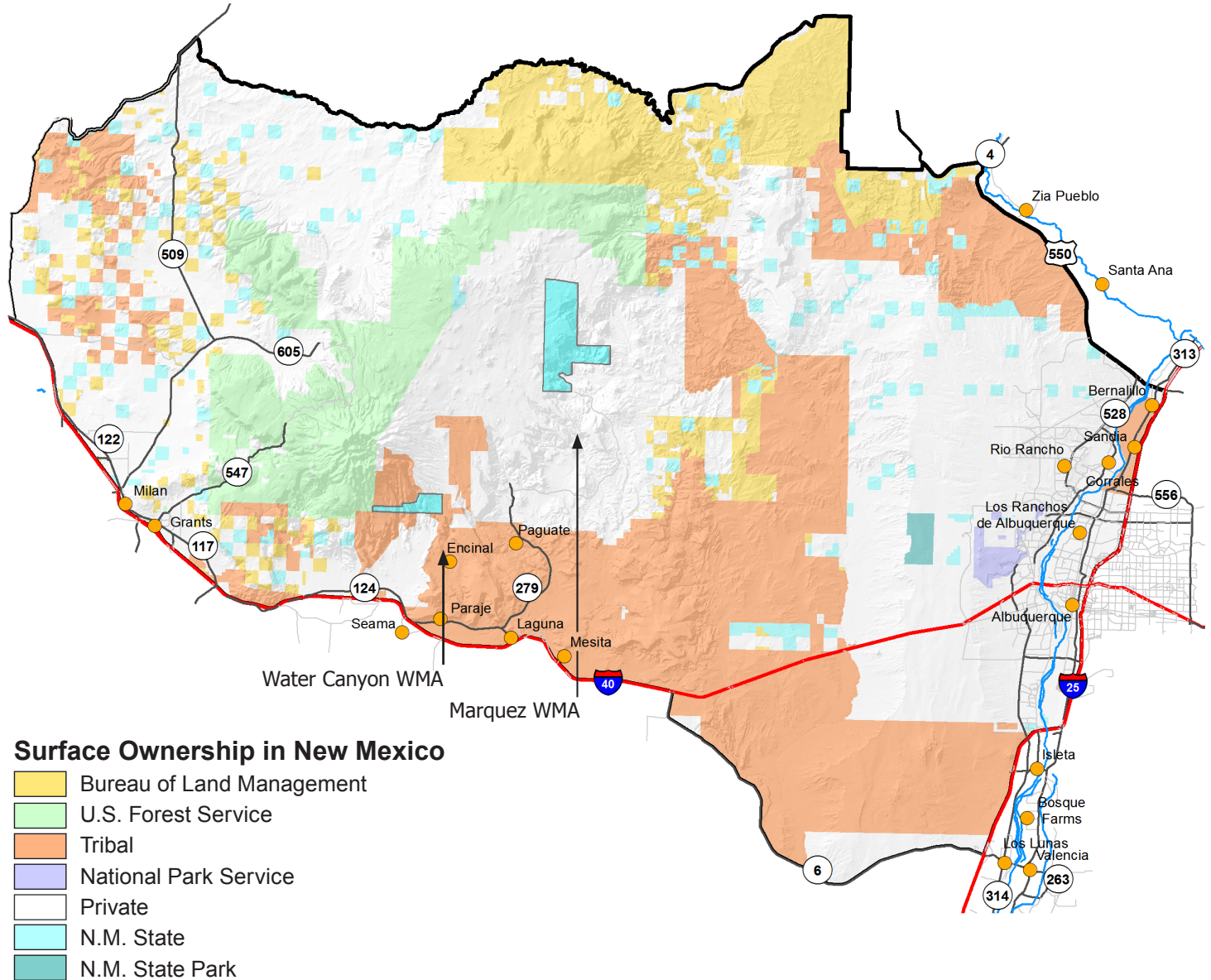




Game Management Unit 9

New Mexico Department of Game and Fish

Conserving New Mexico's Wildlife for Future Generations



GMU 9: Beginning at Prewitt at the junction of I-40 and CR 19 (the road to Hospah) and running north along the CR 19 to its intersection with Inditos draw, then south and east down Inditos draw to its junction with Voght draw, then east down Voght draw to its junction with arroyo Chico, then east down arroyo Chico to its intersection with the BLM road 1103 (the San Luis road, leading from Cabezon to US 550), then northeast along BLM road 1103/San Luis road to its intersection with the west boundary of the Jemez Indian reservation, then south and east along the Jemez reservation boundary to the boundary of the Zia Indian reservation, then south, east, and north along the Zia reservation boundary to its intersection with US 550 west of San Ysidro, then east and southeast along US 550 to its junction with I-25 at Bernalillo, then south along I-25 to its junction with NM 6 at Los Lunas, then west and northwest along NM 6 to its junction with I-40, then west along I-40 to Prewitt.

Maps available for GMU 9

BLM: Acoma Pueblo Quad, Albuquerque Quad, Belen Quad, Chaco Mesa Quad, Grants Quad and Los Alamos Quad; **U.S. FOREST SERVICE:** Cibola National Forest, Mount Taylor District. These and other maps may be found at the New Mexico Public Lands Information Center:

1-877-851-8946 and <http://plicmapcenter.org/NM/>.