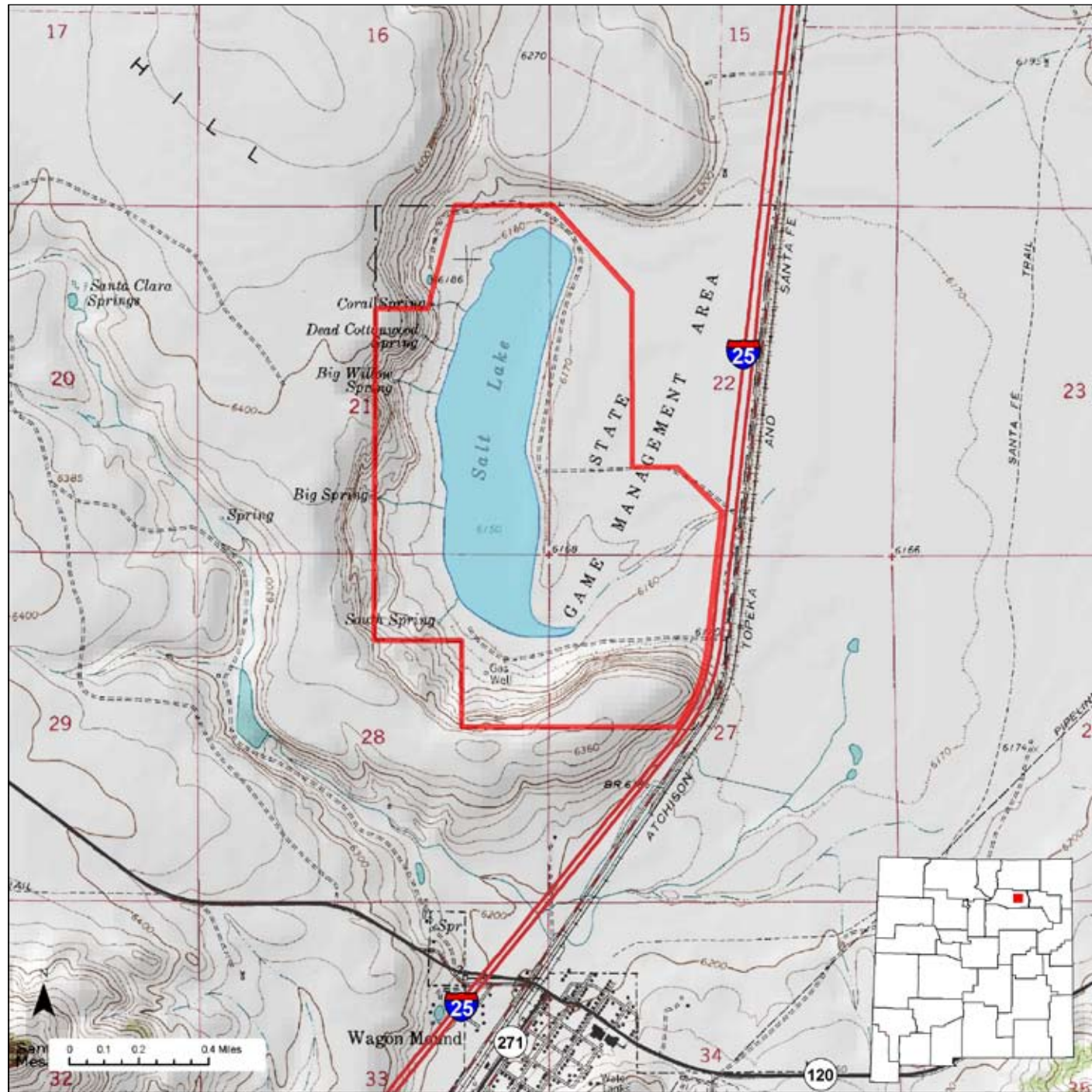




# Wagon Mound Wildlife Area



**Location:** Wagon Mound Wildlife Area is located about 1/2 mile northwest of Wagon Mound.

**Total Acreage:** 850 acres.

**Purchase:** The final purchase of property forming Wagon Mound Wildlife Area was made in 1953. The area provides habitat for waterfowl.

**Description:** The Salt Lake is surrounded by high plains grasslands and bounded on three sides by a high ridge.

**For More information:** More information about hunting, fishing and other activities, may be found on the Department's website: [www.wildlife.state.nm.us/](http://www.wildlife.state.nm.us/).

GAIN Activities	What to See, Do, and Learn
<ul style="list-style-type: none"> <li>✓ Wildlife Viewing</li> <li>✓ Photographing</li> </ul>	<p><b>Wildlife Viewing</b>-Wildlife watchers may see various waterfowl year-round. Good binoculars are important. The best time to view wildlife is at dawn or dusk.</p>
<b>Access</b>	
<ul style="list-style-type: none"> <li>✓ Hiking</li> <li>✓ Bicycling</li> <li>✓ Horseback Riding</li> </ul>	<p><b>Photographing</b>-The best time to photograph wildlife is at dawn or dusk. A telephoto lens may be important.</p> <p><b>Hiking</b>-Hiking is the best way to see wildlife at Wagon Mound Wildlife Area year-round or other wildlife management areas.</p> <p><b>Bicycling</b>-Allowed year round only on established roads.</p> <p><b>Horseback Riding</b>-Allowed year-round.</p>
<b>Hunting and Fishing</b>	
<ul style="list-style-type: none"> <li>✓ Hunting</li> <li>✓ No fishing</li> </ul>	<p><b>Camping</b>-Not allowed at Wagon Mound Wildlife Area.</p> <p><b>Hunting</b>-Waterfowl hunting allowed during open season.</p> <p><b>Fishing</b>-No fishing opportunities.</p>
<b>Closures</b>	
<ul style="list-style-type: none"> <li>✓ No</li> </ul>	<p><b>Closures</b>-Wagon Mound Wildlife Area is open year-round.</p>
<b>Facilities</b>	
<ul style="list-style-type: none"> <li>✓ No rest rooms</li> <li>✓ No camp sites</li> <li>✓ No drinking water</li> </ul>	<p><b>Facilities</b>-Wagon Mound Wildlife Area does not have rest rooms, camp sites, or drinking water.</p> <p><b>Fees</b>-Hunters must have appropriate licenses and permits. Wildlife viewers, photographers, hikers, bicyclists, and horseback riders must have a valid license or permit. See the Department's website <a href="http://www.wildlife.state.nm.us">www.wildlife.state.nm.us</a> for more information.</p>
<b>Fees</b>	
<ul style="list-style-type: none"> <li>✓ Yes</li> </ul>	<p><b>Motorized Vehicles</b>-Not allowed beyond parking area.</p>
<b>Motorized Vehicles</b>	
<ul style="list-style-type: none"> <li>✓ Not allowed beyond the roadway and parking area</li> </ul>	
<p><b>For more information on hunting and fishing rules and seasons, please read current hunting or fishing Rules and Information Booklets available on the Department's website, at Department offices, or from license vendors state-wide.</b></p>	